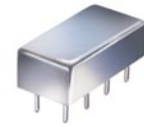


# Plug-In Frequency Mixer

## SRA-3500+

Level 7 (LO Power +7 dBm) 500 to 3500 MHz



CASE STYLE: A06  
PRICE: \$33.20 ea. QTY (1-9)

### Maximum Ratings

Operating Temperature	-55°C to 100°C
Storage Temperature	-55°C to 100°C
RF Power	50mW
IF Current	40mA

### Pin Connections

LO	1
RF	8
IF	3
GROUND	2,5,6,7
CASE GROUND	2,5,6,7
NOT USED	4

### Features

- excellent conversion loss, 7.28 dB typ.
- good L-R isolation, 30 dB typ. L-I isolation, 20 dB typ.
- rugged welded construction
- hermetically, sealed

### Applications

- satellite distribution
- MMDS
- GSM/ISM
- defense radar

**+ RoHS compliant in accordance with EU Directive (2002/95/EC)**

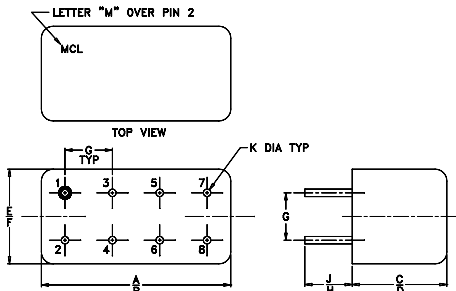
The +Suffix has been added in order to identify RoHS Compliance. See our web site for RoHS Compliance methodologies and qualifications.

### Electrical Specifications

FREQUENCY (MHz)	CONVERSION LOSS* (dB)	LO-RF ISOLATION (dB)		LO-IF ISOLATION (dB)		
		Typ.	Min.	Typ.	Min.	
500-3500	DC-1000	7.28	30	17	20	8

1 dB COMP.: +1 dBm typ.  
\*conversion loss 10 dBm at IF=1000 MHz  
m= mid band [ $2f_L$  to  $f_U/2$ ]

### Outline Drawing



### Outline Dimensions (inch)

A	B	C	D	E	F
.770	.800	.285	.310	.370	.400
19.56	20.32	7.24	7.87	9.40	10.16

G	H	J	K	wt
.200	.20	.14	.031	grams
5.08	5.08	3.56	0.79	5.2

### Typical Performance Data

Frequency (MHz)		Conversion Loss (dB)	Isolation L-R (dB)	Isolation L-I (dB)	VSWR RF Port (:1)	VSWR LO Port (:1)
RF	LO	LO +7dBm	LO +7dBm	LO +7dBm	LO +7dBm	LO +7dBm
500.00	530.00	5.49	44.57	34.18	1.82	2.52
676.47	646.47	4.86	45.01	32.12	1.20	2.56
852.94	822.94	5.14	44.31	30.77	1.33	2.66
1000.00	970.00	5.49	43.00	30.12	1.64	2.80
1117.65	1087.65	6.31	41.48	29.93	1.89	2.68
1294.12	1264.12	6.71	38.60	28.62	2.32	2.35
1382.35	1352.35	6.65	38.54	29.04	2.85	2.17
1500.00	1470.00	6.73	37.52	28.95	3.54	2.01
1647.06	1617.06	6.75	35.53	26.47	4.67	1.68
1823.53	1793.53	7.16	34.94	23.92	5.54	1.27
2000.00	1970.00	7.35	34.78	22.93	6.01	1.26
2088.24	2058.24	7.33	34.08	22.73	5.25	1.36
2264.71	2234.71	7.35	33.58	22.82	5.33	1.55
2500.00	2470.00	7.31	35.10	23.41	5.23	1.61
2617.65	2587.65	7.08	34.51	23.33	5.56	2.09
2882.35	2852.35	7.51	34.73	23.28	6.46	2.31
3000.00	2970.00	7.49	35.30	23.26	5.30	2.36
3147.06	3117.06	7.27	36.75	23.89	5.28	2.34
3323.53	3293.53	7.09	43.96	25.30	4.27	2.29
3500.00	3470.00	6.45	40.55	26.12	2.39	2.15

### Electrical Schematic

